

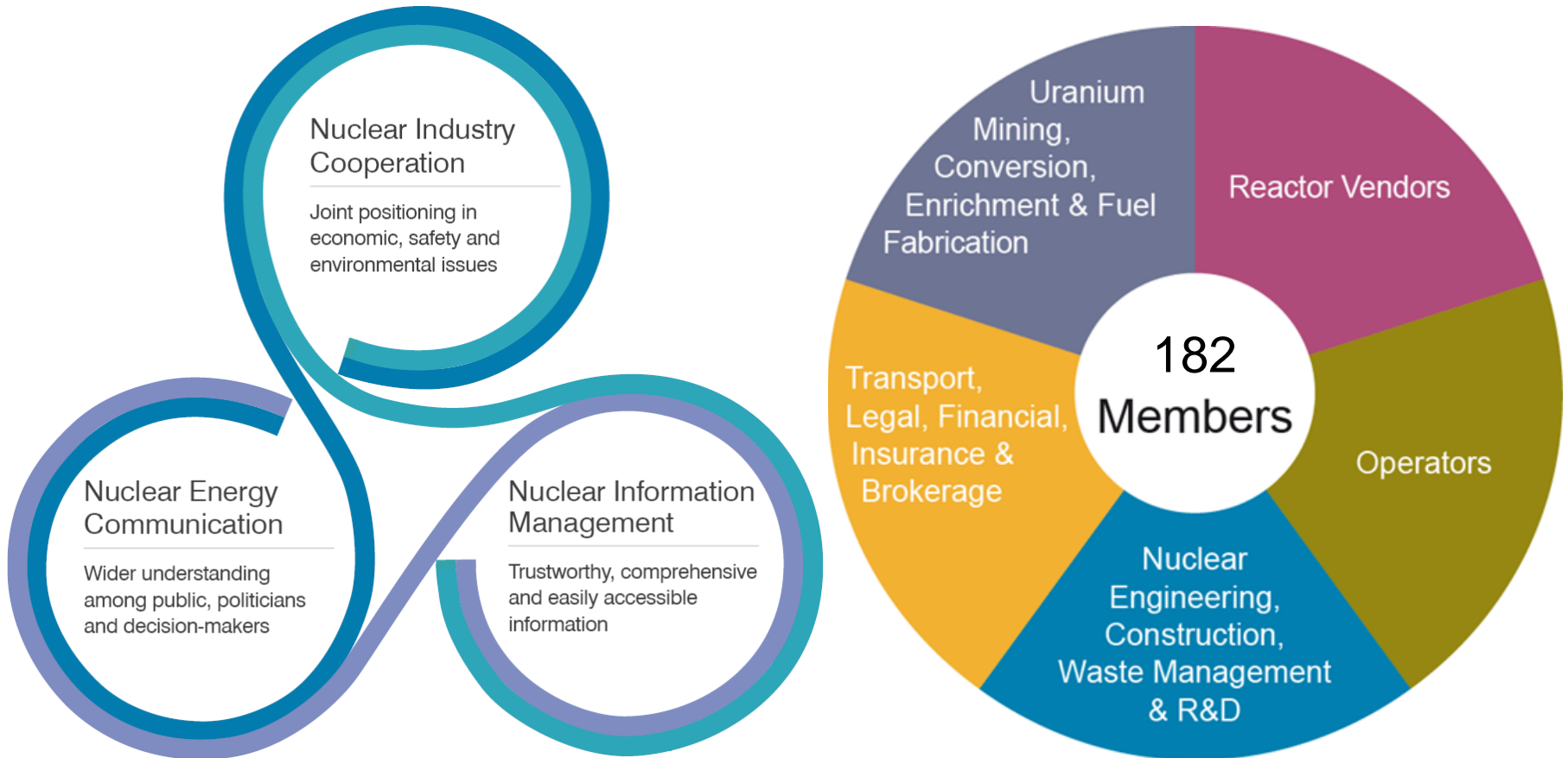
# Introduction to Session 5: Enhancing international cooperation to prepare for new technologies and emerging challenges



Greg KASER  
Staff Director – Supply Chain Working Group

Workshop on Supply Chain  
Management  
Paris  
6 November 2018

# World Nuclear Association activities and members



## 12 Working Groups:

- Fuel Cycle
- CORDEL (Regulation)
- Economics
- Supply chain
- Transport
- Law, etc.

## Strategic outreach:

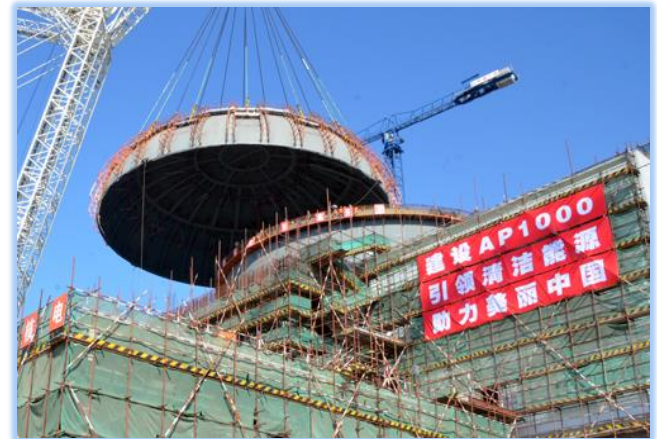
- Decision-makers
- Industry partners
- Media
- Business associations



# Introduction to the panel

Regulatory challenges arising from supply chain globalization and emerging manufacturing and construction technologies

1. International cooperation
  - Regulation: Michael FINNERTY
2. Technology
  - Looking ahead: Marc TANNENBAUM
3. Globalization of the supply chain
  - Challenges: Pekka PYY
  - Standards: Philippe MALOUINES
  - Quality: Denis BOUGUIGNON



“We must take the current  
when it serves, or lose our  
ventures.”

Brutus in *Julius Caesar* Act 4 Scene 3 by William  
Shakespeare (1599)

“Il nous faut suivre le courant  
tandis qu'il nous sert, ou ruiner  
notre expédition [entreprise].”

Brutus dans *Jules César* Scène XIII by William  
Shakespeare (traduction par François-Victor Hugo,  
1872)

Thank you:  
Greg KASER  
WNA London  
[greg.kaser@world-nuclear.org](mailto:greg.kaser@world-nuclear.org)  
[www.world-nuclear.org](http://www.world-nuclear.org)

[www.world-nuclear.org](http://www.world-nuclear.org)